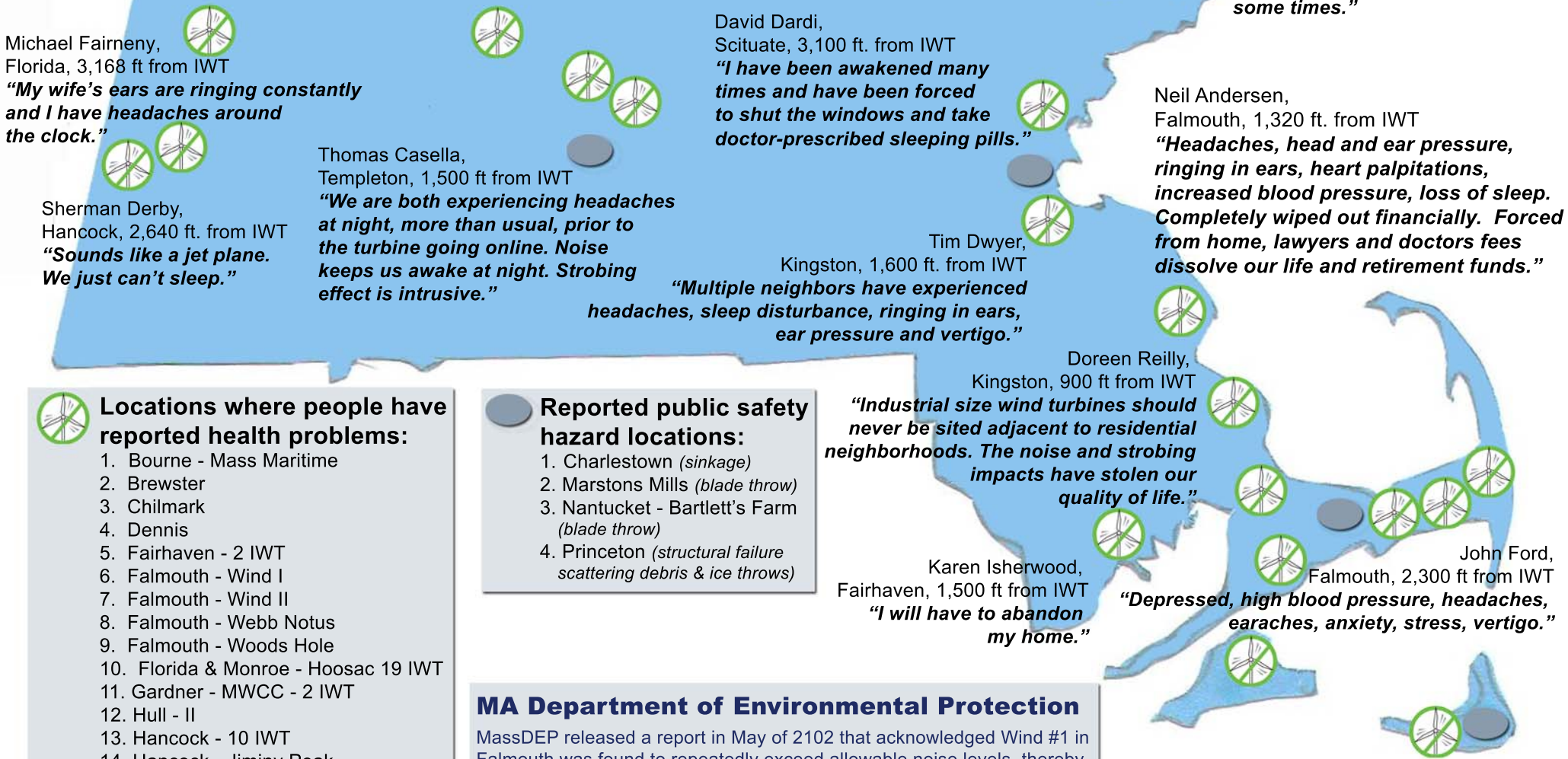


Public Health Disaster Rolling Across Massachusetts

Adverse Health Impacts from Wind Turbines

This is a Call to Stop Harming People and Conduct Honest, Transparent and Independent Research

*IWT - Industrial Wind Turbine



Michael Fairmeny,
Florida, 3,168 ft from IWT
"My wife's ears are ringing constantly and I have headaches around the clock."

Sherman Derby,
Hancock, 2,640 ft. from IWT
"Sounds like a jet plane. We just can't sleep."

Thomas Casella,
Templeton, 1,500 ft from IWT
"We are both experiencing headaches at night, more than usual, prior to the turbine going online. Noise keeps us awake at night. Strobing effect is intrusive."

David Dardi,
Scituate, 3,100 ft. from IWT
"I have been awakened many times and have been forced to shut the windows and take doctor-prescribed sleeping pills."

Tim Dwyer,
Kingston, 1,600 ft. from IWT
"Multiple neighbors have experienced headaches, sleep disturbance, ringing in ears, ear pressure and vertigo."

Nan Cook,
Newburyport, 1,000 ft from IWT
"The strobing effect is excruciating. We have to leave our home some times."

Neil Andersen,
Falmouth, 1,320 ft. from IWT
"Headaches, head and ear pressure, ringing in ears, heart palpitations, increased blood pressure, loss of sleep. Completely wiped out financially. Forced from home, lawyers and doctors fees dissolve our life and retirement funds."

Doreen Reilly,
Kingston, 900 ft from IWT
"Industrial size wind turbines should never be sited adjacent to residential neighborhoods. The noise and strobing impacts have stolen our quality of life."

Karen Isherwood,
Fairhaven, 1,500 ft from IWT
"I will have to abandon my home."

John Ford,
Falmouth, 2,300 ft from IWT
"Depressed, high blood pressure, headaches, earaches, anxiety, stress, vertigo."

Locations where people have reported health problems:

1. Bourne - Mass Maritime
2. Brewster
3. Chilmark
4. Dennis
5. Fairhaven - 2 IWT
6. Falmouth - Wind I
7. Falmouth - Wind II
8. Falmouth - Webb Notus
9. Falmouth - Woods Hole
10. Florida & Monroe - Hoosac 19 IWT
11. Gardner - MWCC - 2 IWT
12. Hull - II
13. Hancock - 10 IWT
14. Hancock - Jiminy Peak
15. Hyannis - Country Garden
16. Kingston - Independence
17. Kingston - 3 IWT
18. Nantucket - HS
19. Newburyport
20. Scituate
21. Templeton

Reported public safety hazard locations:

1. Charlestown (sinkage)
2. Marstons Mills (blade throw)
3. Nantucket - Bartlett's Farm (blade throw)
4. Princeton (structural failure scattering debris & ice throws)

MA Department of Environmental Protection

MassDEP released a report in May of 2102 that acknowledged Wind #1 in Falmouth was found to repeatedly exceed allowable noise levels, thereby creating nuisance conditions as currently defined under MassDEP noise regulation (310 CMR 7.10). This finding by the MassDEP supports the fact that the nuisance conditions created by Wind #1 were a credible threat to public health as defined by the MassDEP's Noise Regulations and Responsibilities. Most importantly, these findings by the MassDEP fully support the veracity of the significant health impacts detailed by MA residents who currently reside near wind turbine installations.